

Position yourself to adapt quickly to market structure trends and changes with our newest data product, featuring critical statistics and analysis

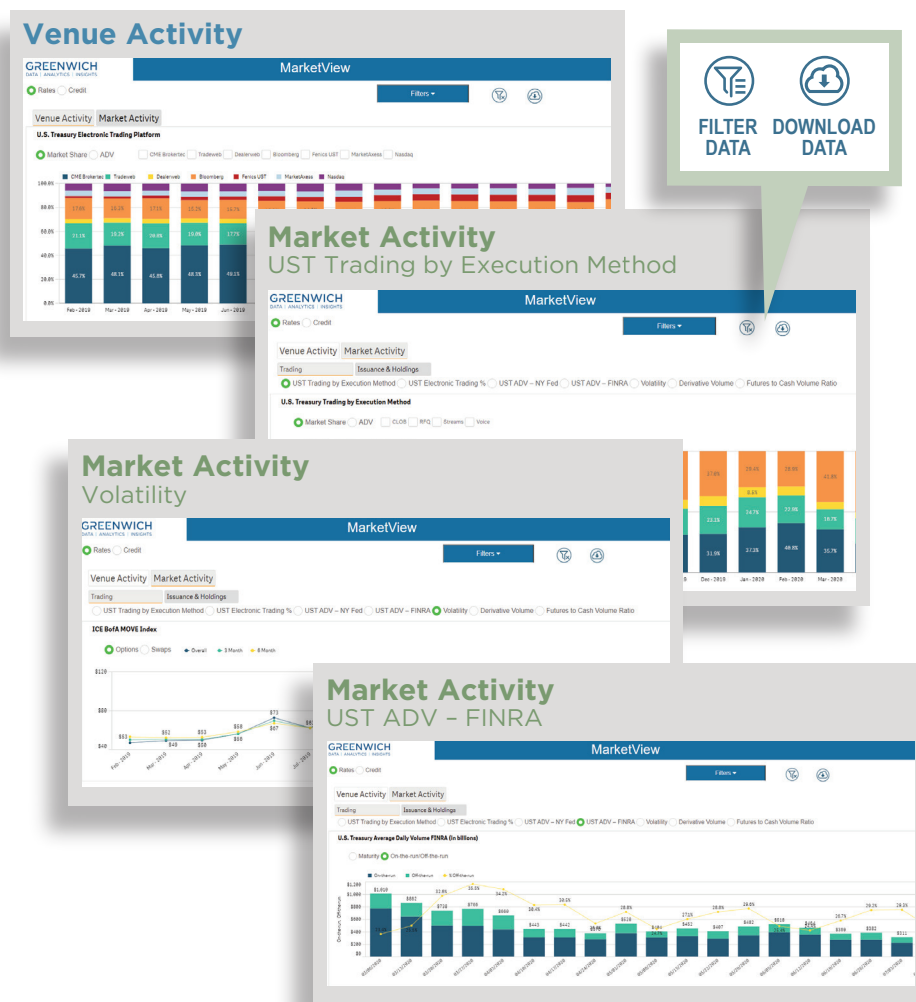


The markets have reached a new level of transparency, but gathering and making sense of all the information is challenging.

In response, we created a **dynamic view into major institutional markets** using our data in combination with disparate sets produced by market participants, regulators and industry associations.

Our **centralized resource** and **monthly analysis** informs your ability to identify and adapt quickly to market structure trends and changes as they happen.

What It Looks Like and the Data



Venue Activity

- Market Share and ADV by Platform
 - CME BrokerTec
 - Tradeweb
 - Dealerweb
 - Bloomberg
 - FENICS UST
 - MarketAxess
 - Nasdaq

Market Activity

- Trading
 - UST Trading by Execution Method
 - UST Electronic Trading %
 - UST ADV - NY Fed
 - UST ADV - FINRA
 - Volatility
 - Ice BofA MOVE Index - Options
 - Ice BofA MOVE Index - Swaps
 - Derivative Volume
 - UST Futures
 - Interest Rate Swaps
 - CME SOFR Futures
 - EuroDollar Futures
 - Eris Swap Futures
 - Futures to Cash Volume Ratio
- Issuance and Holdings
 - Gross New Issuance
 - Notional Outstanding
 - Primary Dealer Net Positions

Contact

Charles Shippen, Product Manager

Email: marketview@greenwich.com